



# THANK YOU!

This is it, here's your new HI-TECH system! First thank you for your purchase! To make your entry as easy as possible, we have prepared this paper to help you answer your questions. Please read it carefully for your gaming experience!

## Flexible business hours:

If you want to personally deliver or pick up a new device, we would ask you to contact us.

**You can reach us via** Phone: +43 7229 61000 or E-Mail: [office@hi-tech.at](mailto:office@hi-tech.at)

**Our address** HI-TECH - REAL OVERCLOCKED GAMING  
Johann Roithner-Straße 131, 4050 Traun

## TABLE OF CONTENTS

<b>THANK YOU!</b> Contact	2
<b>DAMAGES &amp; RETURN</b>	3
<b>ATTENTION!</b> Safety Informations	4
<b>CONNECTIONS</b> (Monitor/USB)	4
<b>PACKAGE/ACCESSORIES</b>	5
<b>OPERATING &amp; MAINTENANCE</b>	5
<b>OPERATING SYSTEM TRIAL/ANTIVIRUS/WINDOWS</b>	6 – 7
<b>DISABLING WIN8.1 MODE FOR WIN7 INSTALLATION [1 - 2]</b>	8 – 11
<b>WIN10 HOME UPGRADE TO PRO</b>	12
<b>WIN10 CHANGE LANGUAGE</b>	13 – 15
<b>SOUND [1 - 2]</b> Proper use of the sound card	16 – 17
<b>BIOS PROFILE [1 - 3]</b> Settings for loading	18 – 23
<b>WATERCOOLING</b> Maintenance	24
<b>NOTEBOOK</b> Manual Reference	25
<b>INFORMATION</b>	26

# DAMAGES & RETURN

## DAMAGES

In spite of all care during the forwarding process, damage may occur during transport. In this case the carrier will replace the damaged products only if you respect the following procedure.

Basically, transport damage has to be complained about immediately when the product is handed over to you by the carrier (the deliverer of the parcel).

Clearly visible damage: demand a written confirmation of the damage on receipt of the parcel – by means of a written report on the scanner of the deliverer.

After that you need to inform HI-TECH about the identified transport damage.

We occasionally run test-shippings through quality assurance in order to offer highest standards. In such a case a red or purple sticker labeled SHOCKWATCH is located on the package. Please pay special attention to whether the control rod on this sticker is white or red. If it should be colored red, it means that the package has been partially carried out improperly. In this case, please indicate that on the removal order - even if the package is undamaged externally - that the control is red and the shipping was thus carried out improperly. We thank you very much for the help and hope you will enjoy your device!

## RETURN

If problems occur with your PC which entitle you to warranty claims, we have your PC picked up from your home address. If our inspection of the PC proves that the damage is not our responsibility and thus is excluded from any guarantee, you have to bear the costs of this transport. Please also be aware that you keep the original packaging (inner and outer packaging) safe in case of return! Otherwise your PC

may show unnecessary transport damage due to insufficient packaging. We cannot assume liability for this kind of transport damage! We thank you very much for the help and hope you will enjoy your device!

Since the different models (Gamer PCs, notebooks, etc.) are packaged differently, we ask you to contact us at [service@hi-tech.at](mailto:service@hi-tech.at) for more information. Furthermore, we can coordinate a return delivery together.

## ATTENTION!

Please follow these safety instructions:



**WARNING:** Never push objects or spill liquid of any kind into this product.



**ATTENTION:** As opening or removing covers expose you to dangerous voltages or other risks please be very careful and make sure your PC is disconnected from any power source. If any of the above mentioned misuse or other accident such as dropping or mishandling occurs, contact the HI-TECH team or qualified service personell in your area immediately.

## CONNECTIONS

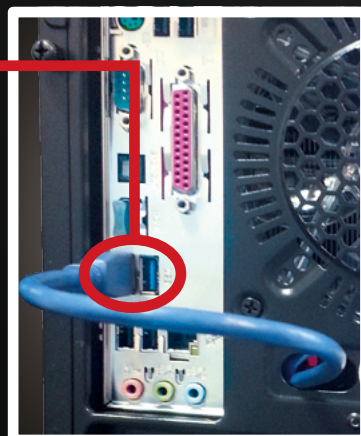
### MONITOR

Please connect your monitor to the existing graphics card (horizontal lines) and NOT on the mainboard (vertical) ports. If your monitor has only a VGA port and not a DVI / HDMI port, you may need to use an active adapter. You get such an active VGA adapter at different electronics suppliers.



### USB

To use the Front-USB-3 correctly, connect the USB cable to one of the blue USB ports on the backside as you can see here. (The blue cable, that you see in the picture is not available for every case)





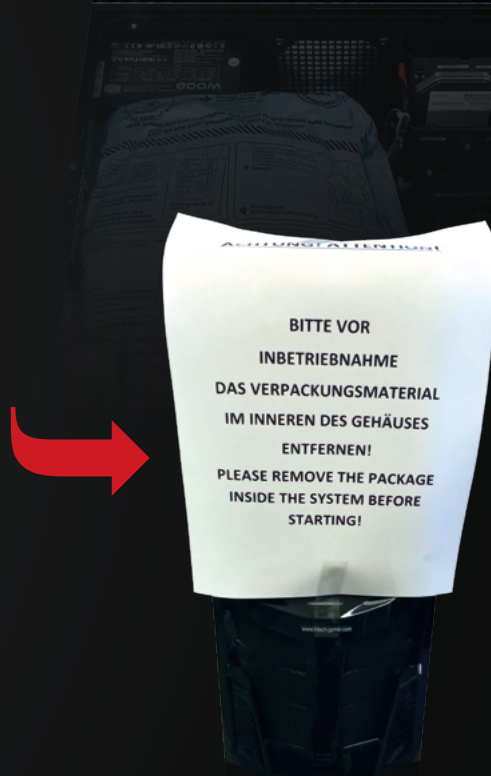
## PACKAGE/ACCESSORIES

Please remove the packaging material (air cushion Fill-Air and/or foam packaging) also inside the case completely! Remove therefore the side panel.



Example

There is a sticker with a warning on the front or the rear of the system.



Example

## OPERATING & MAINTENANCE

Do not expose your PC system to extreme temperatures (room temperature only).

To ensure the longevity of your PC system optimally, we recommend an internal cleaning of the system on a regular basis. In particular, the heatsink & fan set very easily to dust, which can lead to overheating in operation and damage.

# OPERATING SYSTEM TRIAL/ANTIVIRUS/WINDOWS

## OPERATING SYSTEM TRIAL

If you have purchased an operating system, it is installed including ALL drivers and updates. That means that your system is thus fully CAPABLE OF USE!

If you HAVE NOT purchased any operating system, a 30-day trial version is also installed including ALL drivers and updates, that means a valid Product Key is needed and has to be entered after 30 days.

! If no operating system was purchased, a 30-day trial version is pre-installed. After the 30 days, a valid key has to be entered - it is not necessary to uninstall the trial version!

! If you already have a valid Windows 7/8/8.1 Key, you can enable Windows 10 directly with this key and don't have to reinstall!

! If you have a Windows 7/8/8.1 Pro Key, you must upgrade your pre-installed Windows 10 to Pro (see page 12), then enter your Pro Key!



# OPERATING SYSTEM TRIAL/ANTIVIRUS/WINDOWS

## WINDOWS

### CAUTION!

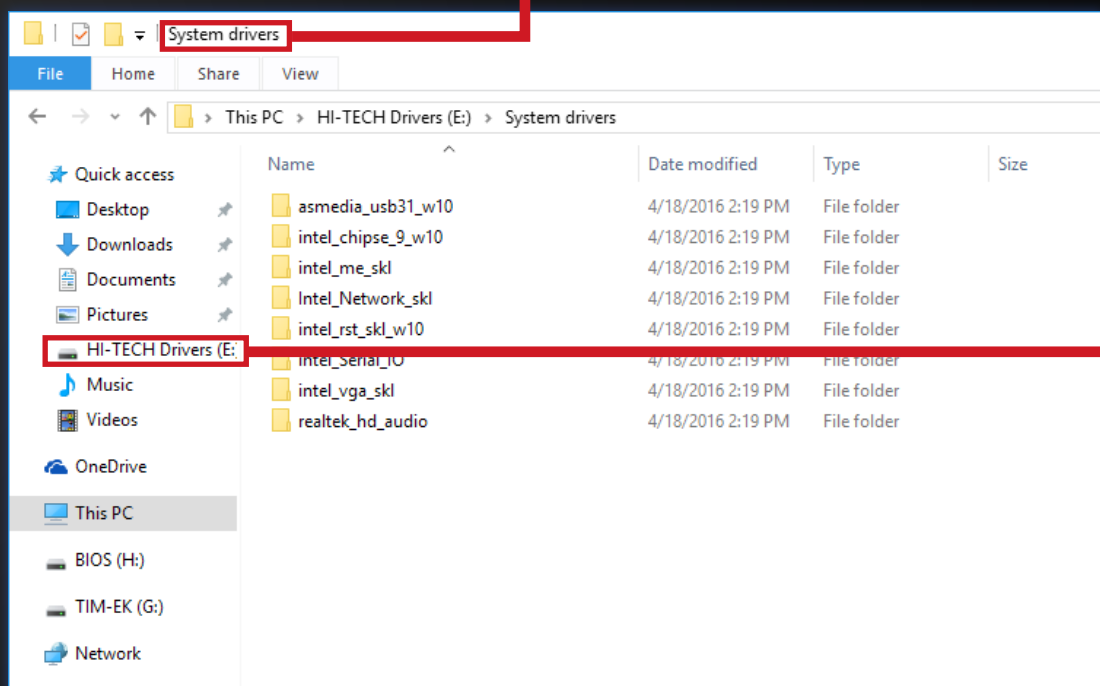
**If you re-install Windows ANY TIME LATER, follow these steps AFTERWARDS:**

Please check that you don't delete or format the partition "HI-TECH TREIBER" before partition creation as the latest drivers for your PC are stored there.

After completing the Windows installation you should continue with the driver installation.

In order to successfully install the motherboard driver, start all setup.exe files in the

subfolders of the category motherboard drivers "System drivers" from the "HI-TECH Drivers" partition. After this process is complete, restart the system.



Then please download and install the file in the folder "graphics driver" to the "HI-TECH Drivers" partition .

During the installation of the graphics driver, it may happen that the image flickers briefly or gets completely black. This is simply the monitor detection.

After the installation is complete, restart

the system again.

To use the full functionality of Windows, it is necessary to complete the evaluation system. Press the "Windows" + "Pause" button. Then you click on "The rating system is not available". By clicking on "Rate this computer" the review will be completed automatically.

Now, you can install the programs you need.

# DISABLING WIN8.1 MODE FOR WIN7 INSTALLATION [1]

## MSI 970A GAMING PRO CARBON

### MSI 970A-G43

- 1 Restart the PC and press the "Del" button repeatedly to enter the BIOS. (alternative: F11 button, then "Enter Setup" at the bottom). Steer with mouse or cursor to the menu point "Settings".



- 2 After reaching this menu, scroll down and select "Advanced".





## DISABLING WIN8.1 MODE FOR WIN7 INSTALLATION [1]

- 3 Select "Windows 8 Configuration" from this submenu.



- 4 Now select the first point "Windows 8 Feature" and switch to "Disabled". Press "F10" and "Enter" button. Now your PC should restart and you can install some other operating system.



# DISABLING WIN8.1 MODE FOR WIN7 INSTALLATION [2]

**MSI Z170A PC MATE**

**MSI Z170A GAMING PRO**

**MSI Z170A GAMING M5**

**MSI Z270-A PRO**

**MSI Z270A GAMING PRO CARBON**

**MSI X99A TOMAHAWK**

**MSI Z170I GAMING PRO AC**

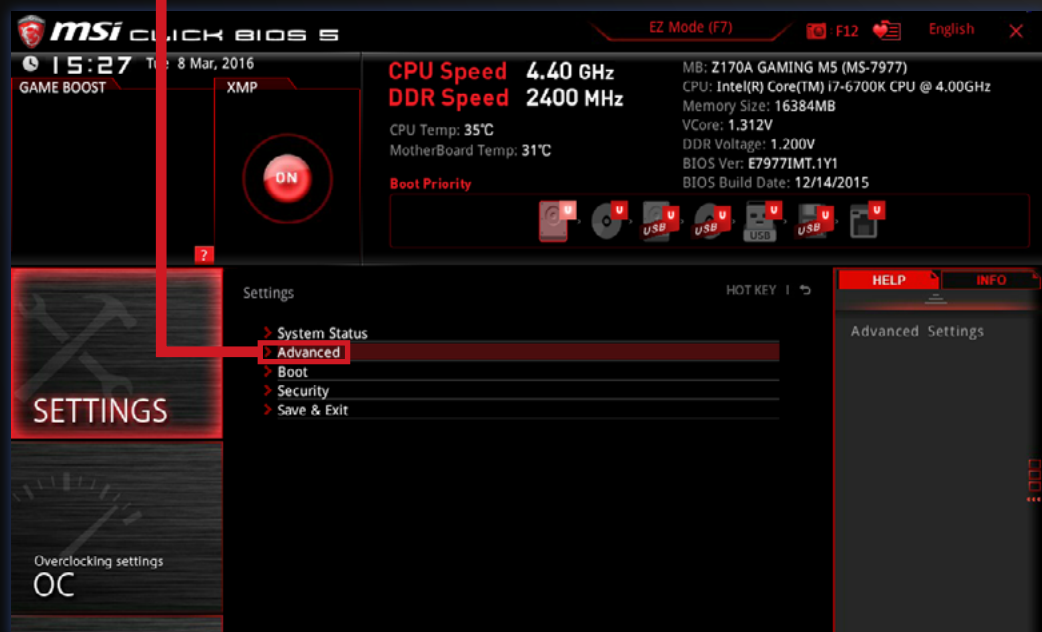
**MSI Z270I GAMING PRO CARBON**

- 1 Restart the PC and press the "Del" button repeatedly to enter the BIOS. Press "F7" button to reach the "Advanced" BIOS menu.

- 2 Steer with mouse or cursor to the menu point "Settings".



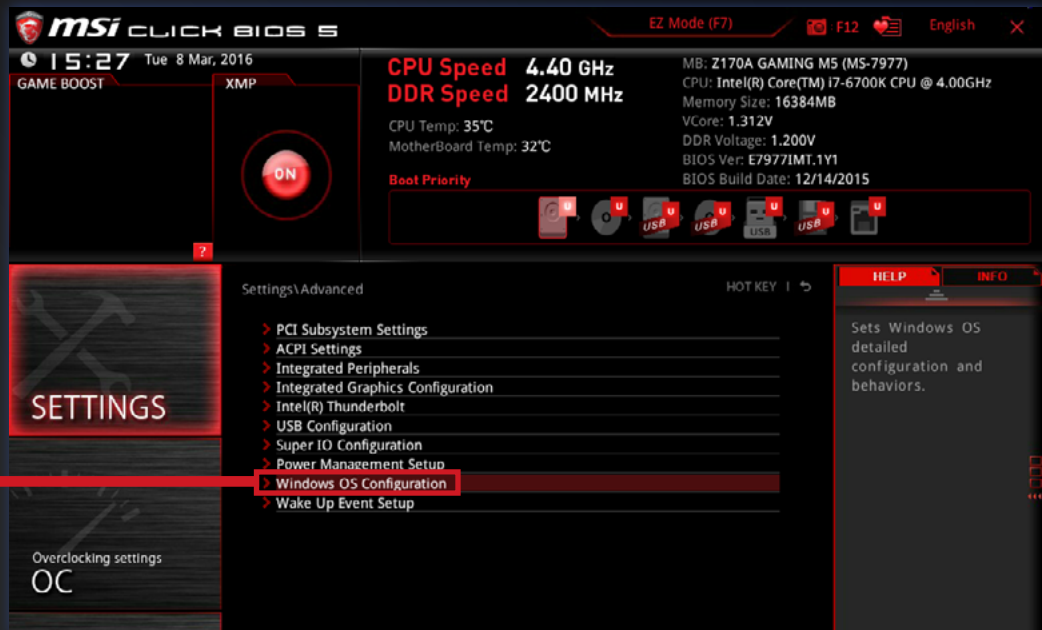
- 3 After reaching "Settings", select "Advanced".





## DISABLING WIN8.1 MODE FOR WIN7 INSTALLATION [2]

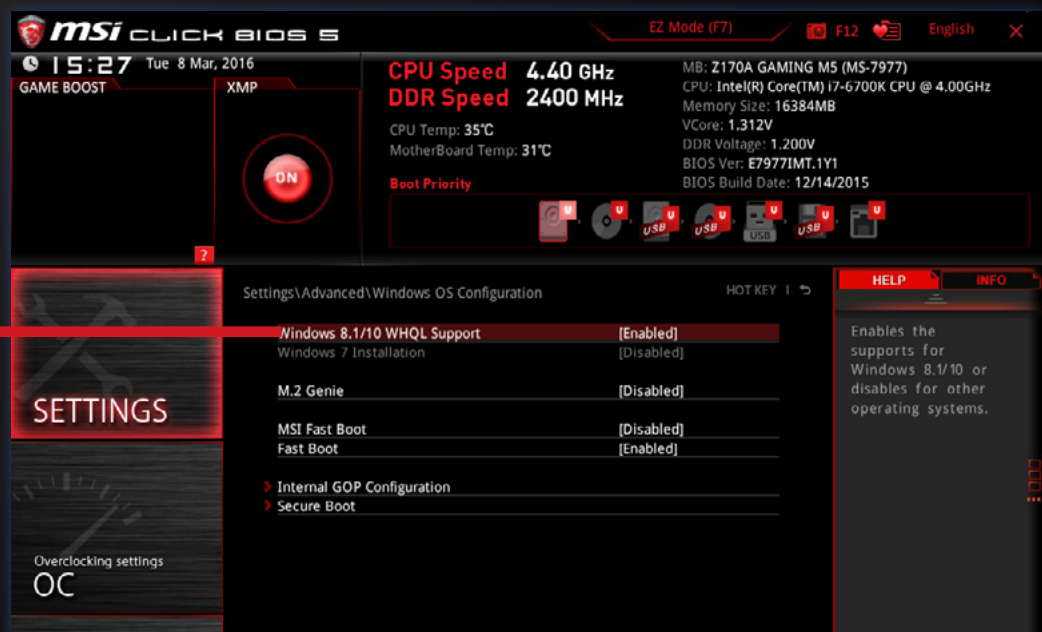
- 4 Select "Windows OS Configuration" from this submenu.



- 5 Now select your desired function (Windows 8.1/10 or Windows 7) and switch to "Enabled" (via "Enter" button or space bar).

Press "F10" and "Enter" button.

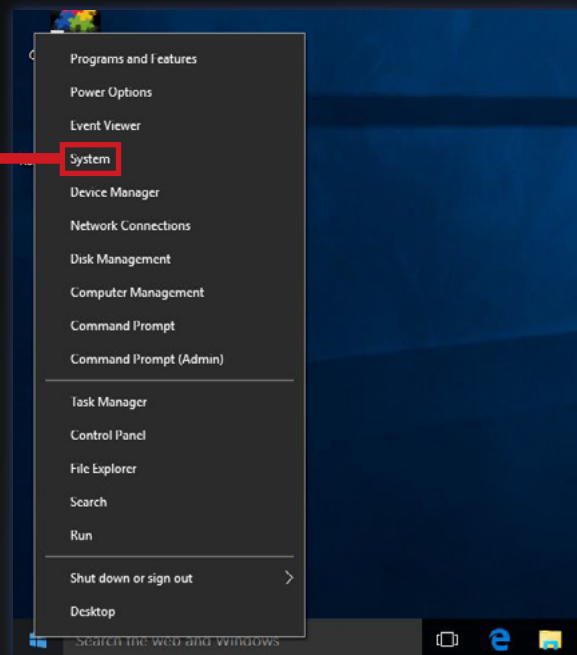
Now your PC should restart and you can install your desired operating system.



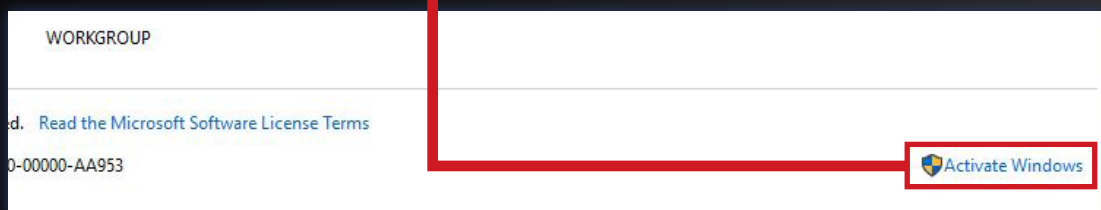
# WIN10 HOME UPGRADE TO PRO

Please ONLY do this if you are in possession of a valid WIN10 PRO license!

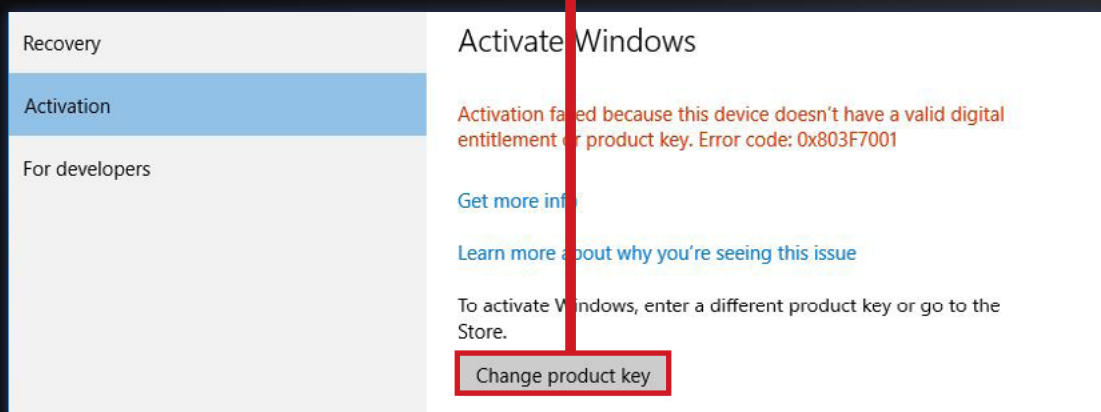
- 1 Navigate with your mouse to the left bottom of the screen and press the right mouse button. Select the point "System".



- 2 Now go to "Activate Windows" in the new window (bottom right).



- 3 Now go to the menu point "Change product key".



- 4 Now enter the following key for a 30-day trial version of Windows 10 Pro:

## NOTE:

- this key is **only** a test version key!

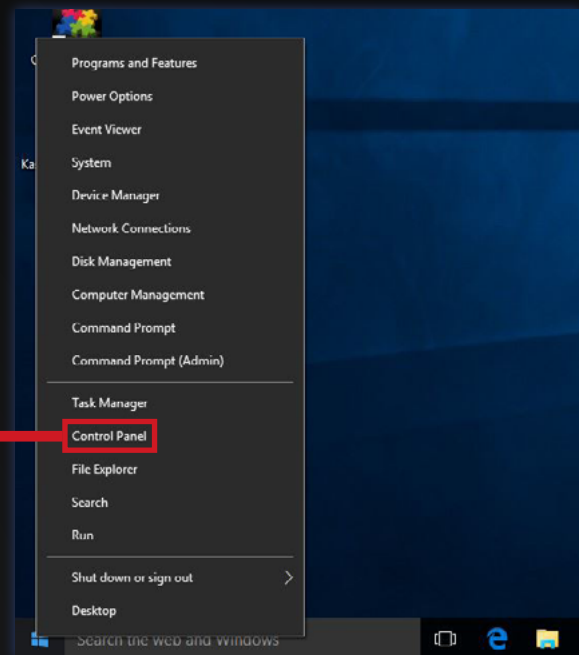
VK7JG-NPHTM-C97JM-9MPGT-3V66T

- 5 Now the upgrade to Windows 10 Pro will start. After completion of this process repeat point 1-3 and then enter your purchased Windows 10 Pro Key in order to convert your operating system to a full version.

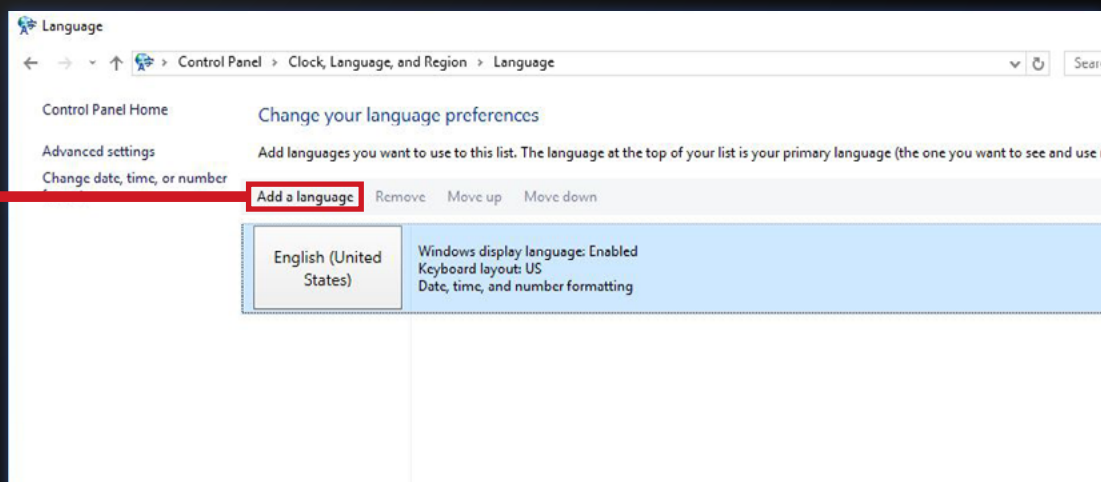
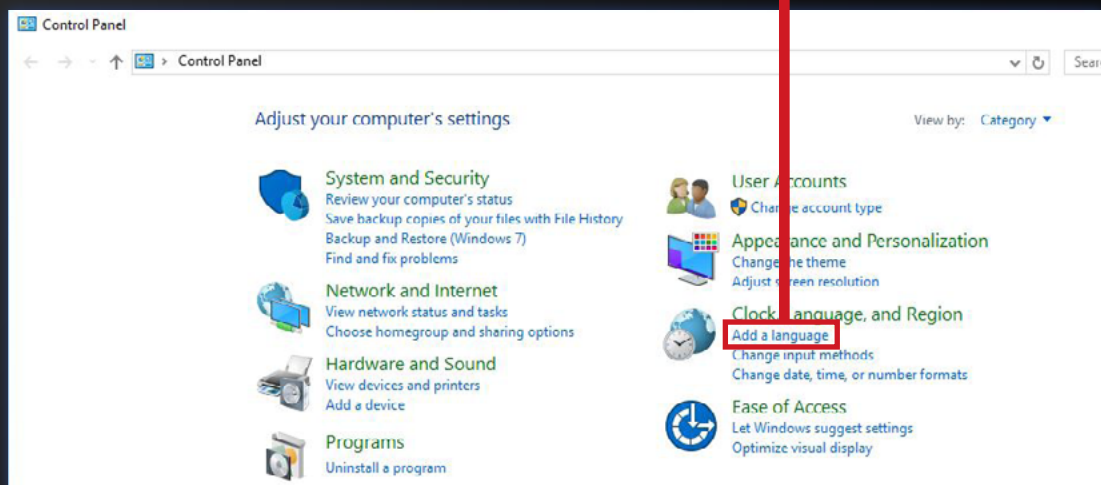
# WIN10 CHANGE LANGUAGE

Internet connection is necessary.

- 1 Right click on windows icon and go to "Control Panel".

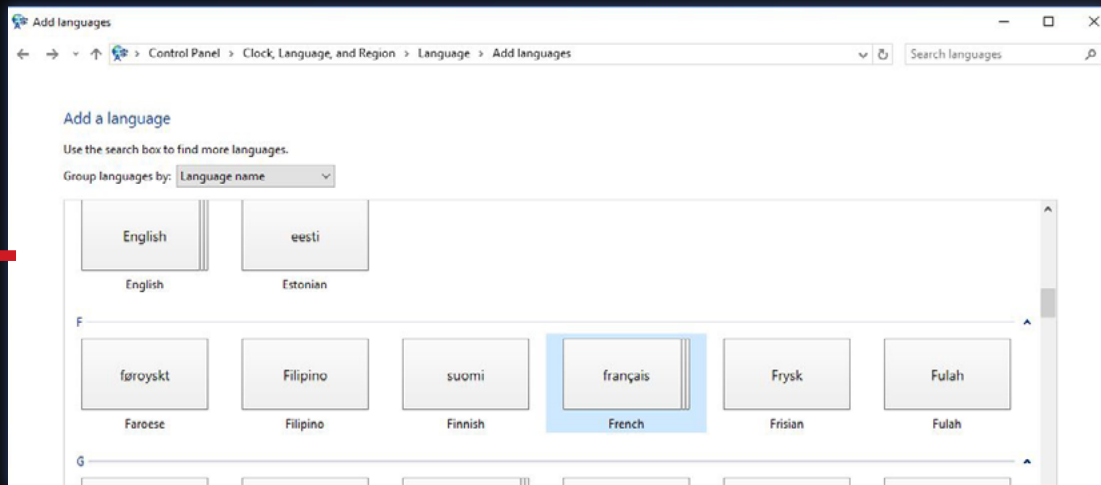


- 2+3 Go to "Add a language".

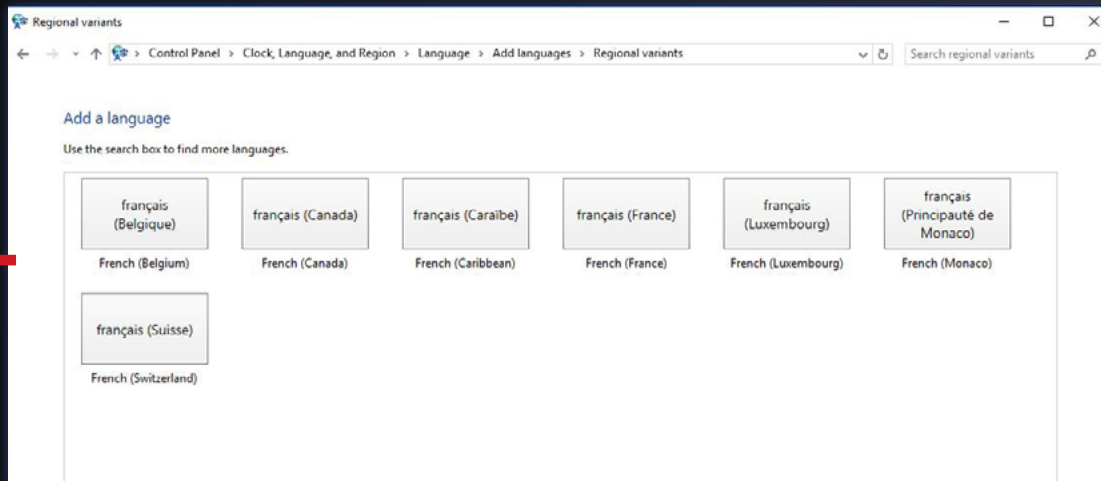


# WIN10 CHANGE LANGUAGE

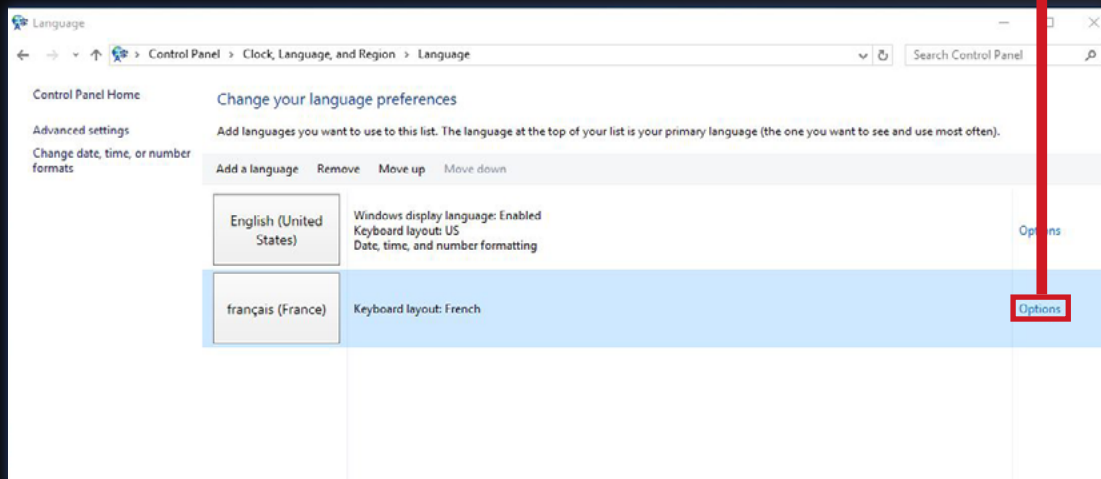
## 4 Choose your language.



## 5 Choose your Keyboard.



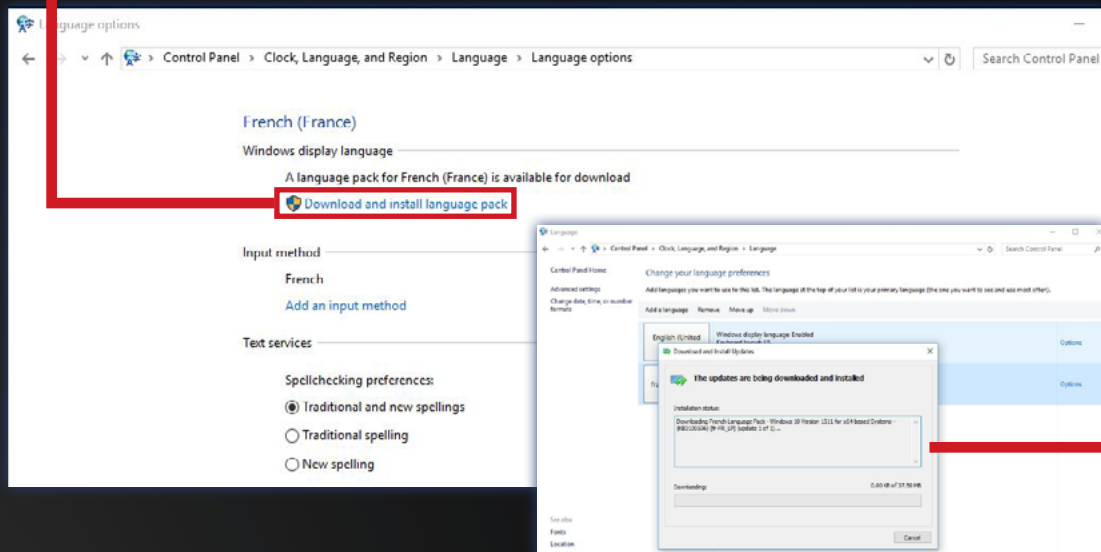
## 6 Now go to the language options of your chosen language --> "Options".



# WIN10 CHANGE LANGUAGE

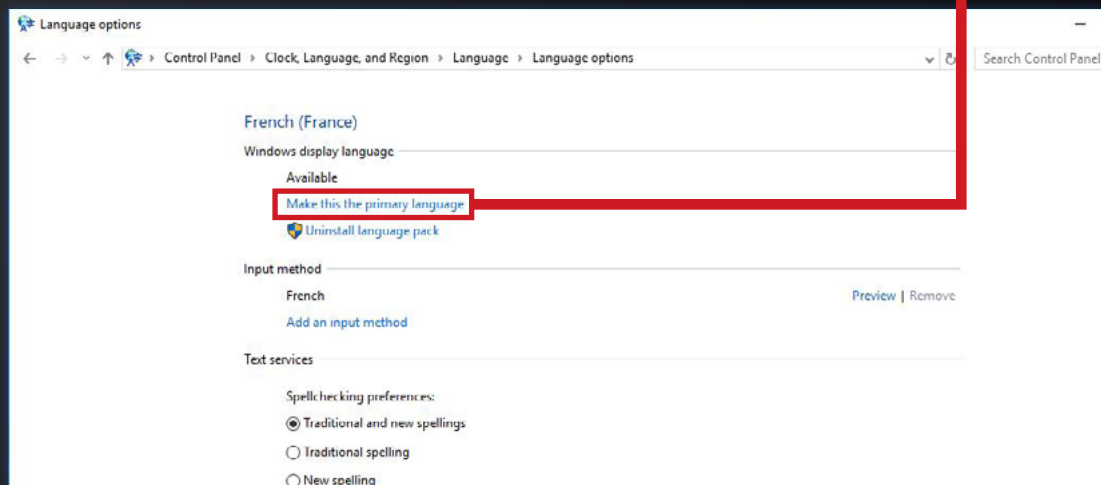
**7** Now click on "Download and install language pack".

**8** Your language will be installed automatically now.

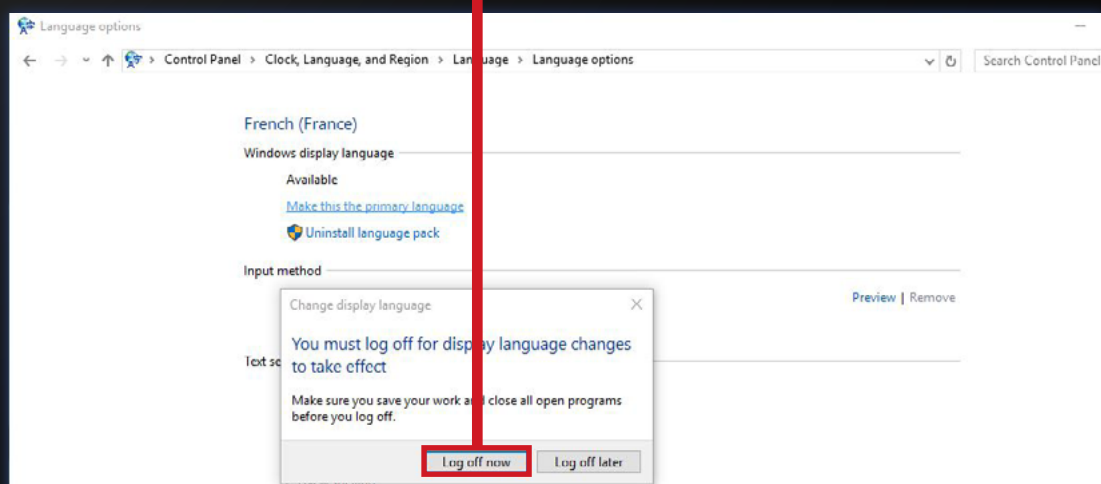


**9** Now go to the language options of your chosen language again and click

on "Make this the primary language".



**10** Finally click on "Log off now".



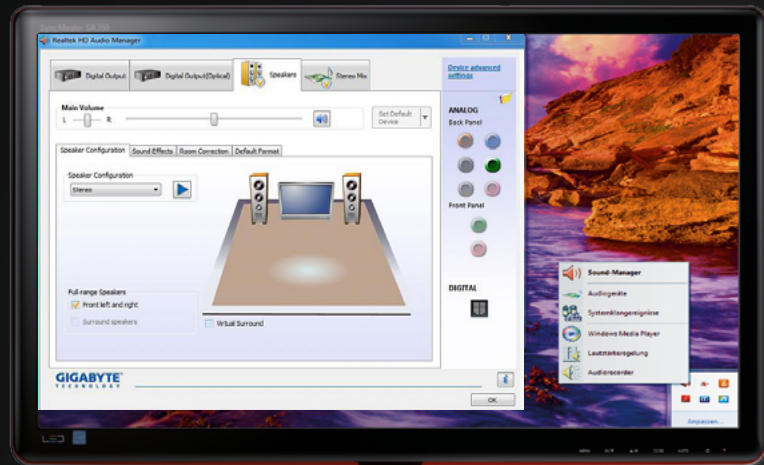


# SOUND [1]

Should your speakers after connecting not be detected, you may need to disable the front jack detection. You do that as follows:

- 1 In the toolbar right below you will find a small orange speaker.

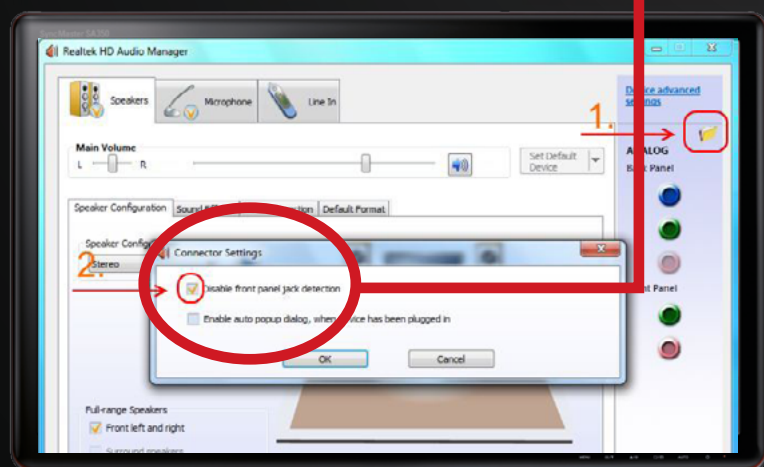
Now right click on the speaker, and then select "Sound-Manager".



Audio Realtek

- 2 In "Sound-Manager" click on the upper right edge of the window on the small folder button. Now another small window opens with port settings.

"Disable front jack detection" now. The speakers should work now!



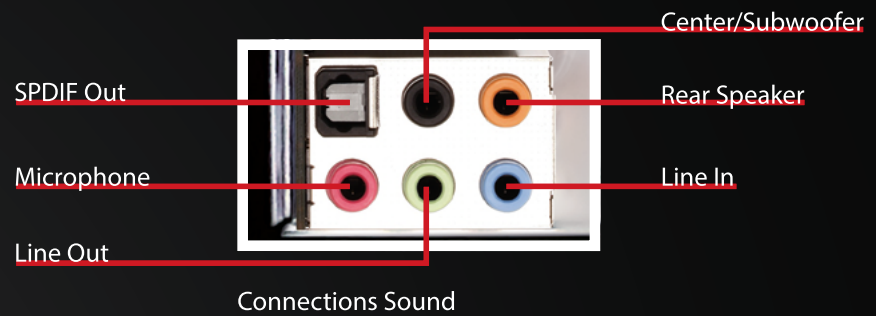
Front Jack Detection



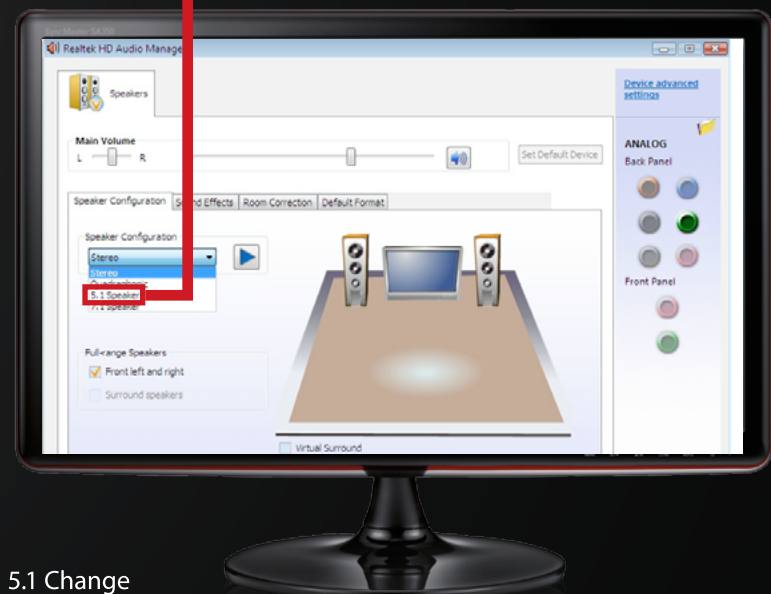
# SOUND [2]

## 5.1 SOUNDSYSTEM

For a 5.1 sound system please note how you have to connect the terminals:



Once you've connected your 5.1 sound system properly, you need to make the following change in the Realtek menu:



5.1 Change

# BIOS SETTINGS FOR LOADING [1]

## MSI 970A-G43

- 1 Restart your PC and press the "Del" button repeatedly to enter the BIOS. Steer with mouse or cursor key to the menu on the left "OC".



- 2 Scroll down and select the point "Overclocking Profiles".



## BIOS SETTINGS FOR LOADING [1]

- 3 Here you select "Overclocking Profile 2".



- 4 Now select „Load Overclocking Profile 2“, load it and then restart with "F10" + "Enter".

- 5 Your PC restarts itself with the right settings.



## BIOS SETTINGS FOR LOADING [2]

MSI Z170A PC MATE

MSI Z170A GAMING PRO

MSI Z170A GAMING M5

MSI 970A GAMING PRO CARBON

MSI Z270-A PRO

MSI Z270A GAMING PRO CARBON

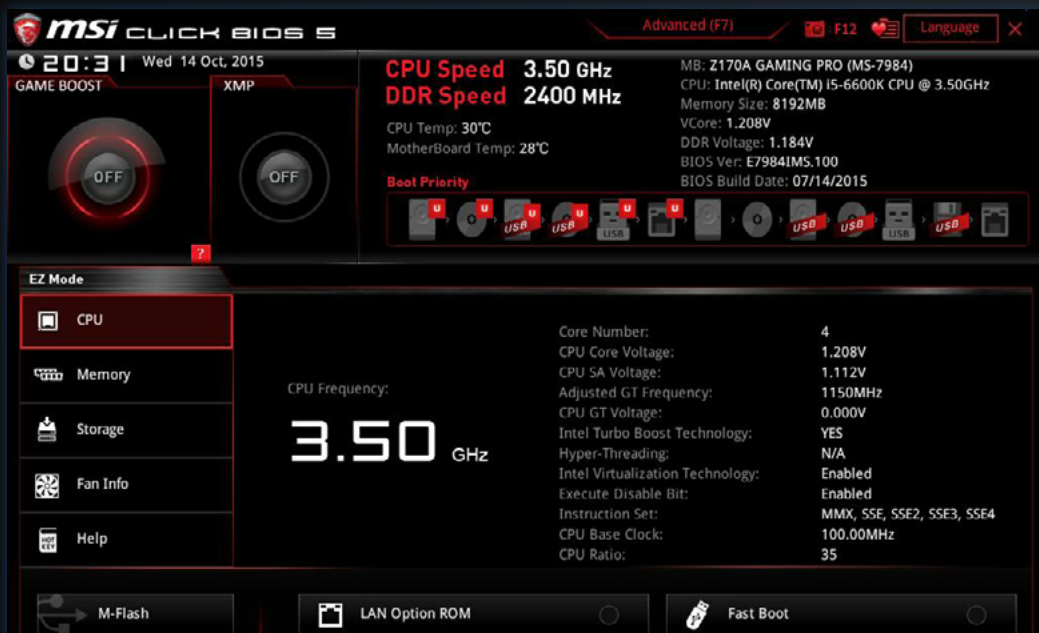
MSI X99A TOMAHAWK

MSI Z170I GAMING PRO AC

MSI Z270I GAMING PRO CARBON

- 1 During start press the "Del" button repeatedly to enter the BIOS menu.

Now press the "F7" key to get into the "Advanced" BIOS menu.



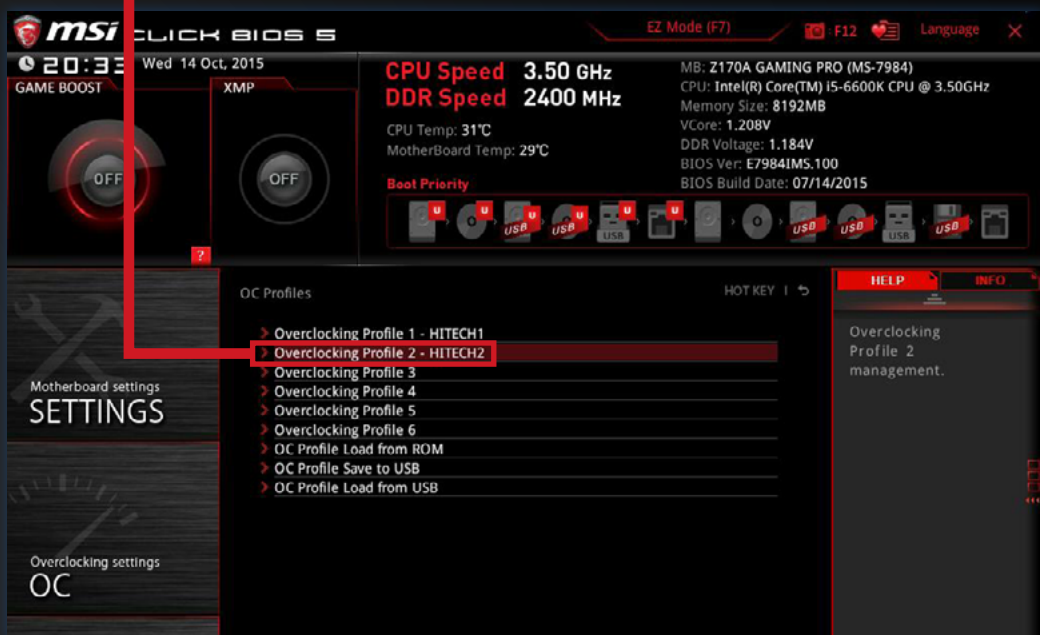
- 2 Now select the submenu "OC Profile".





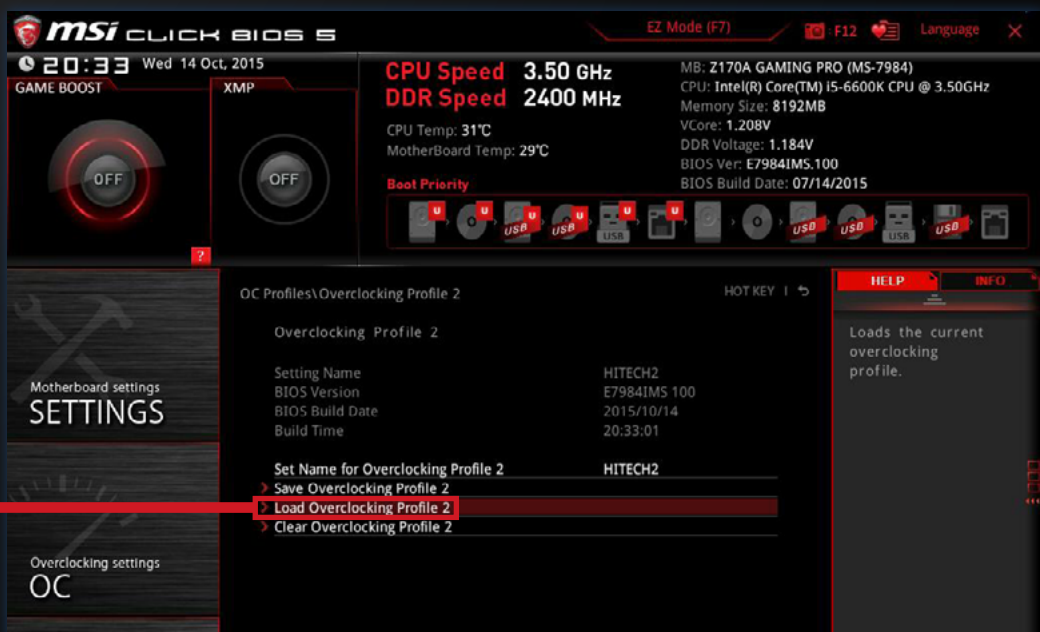
## BIOS SETTINGS FOR LOADING [2]

- 3 Select "Overclocking Profile 2 - HITECH2".



- 4 Select "Load Overclocking Profile 2", confirm and restart your PC with "F10" + "Enter".

- 5 Your PC should restart itself with the right settings.



# BIOS SETTINGS FOR LOADING [3]

## ASUS 970 PRO GAMING/AURA

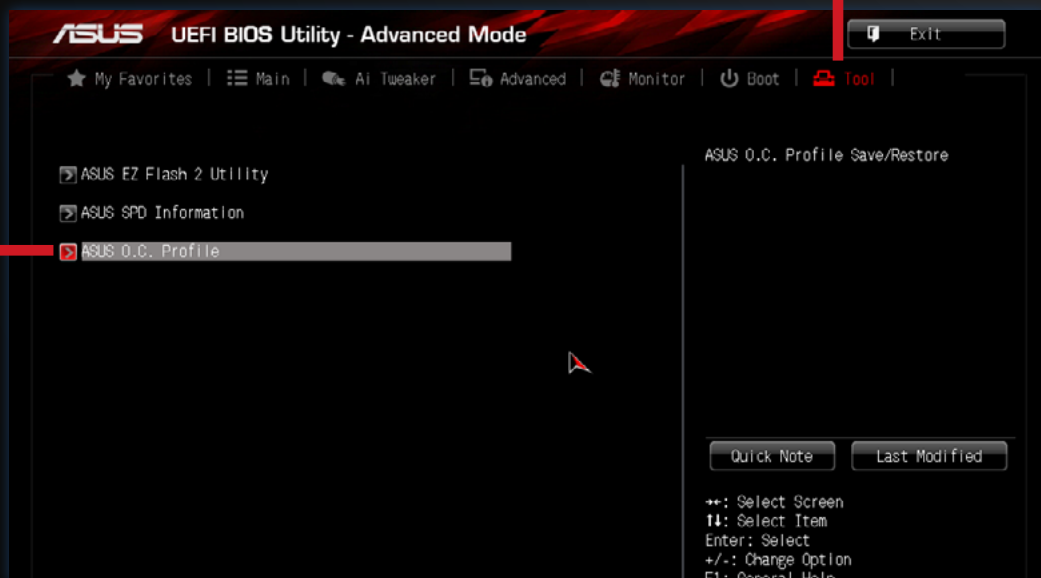
### ASUS M5A97 R2.0

- 1 During start press the "Del" button repeatedly to enter the BIOS menu.

Now press the "F7" key to get into the "Advanced" BIOS menu.



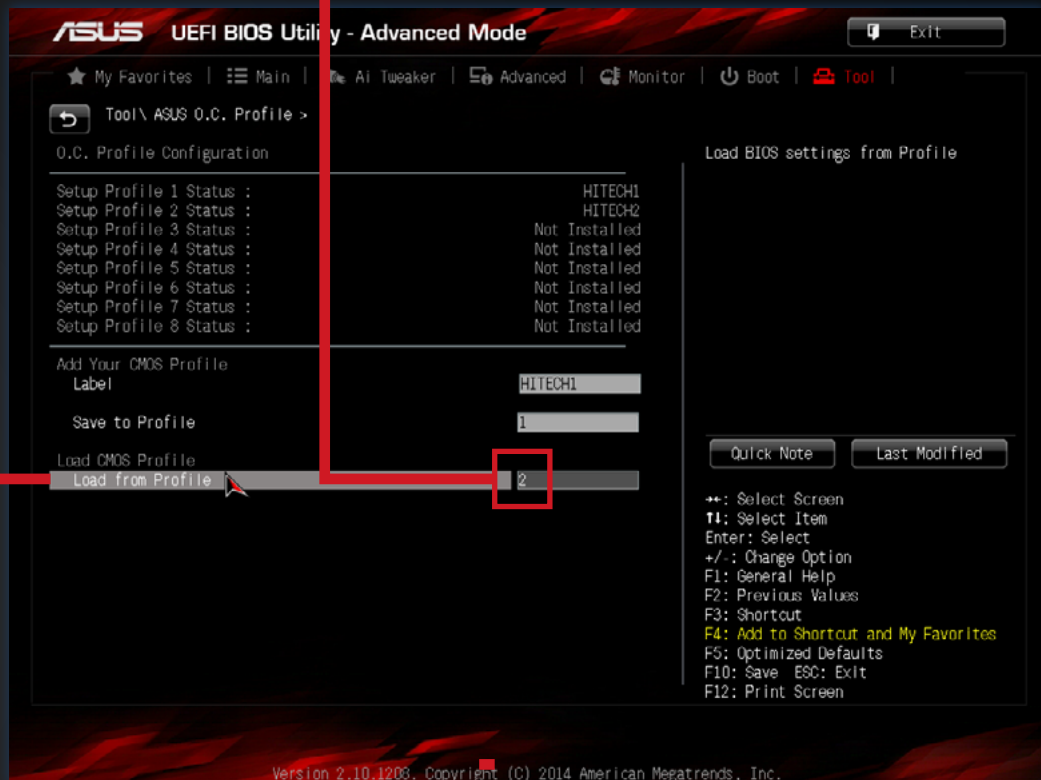
- 2 Now select "Tool".  
Then select "ASUS O.C. Profile".





## BIOS SETTINGS FOR LOADING [3]

- 3 Go to "Load from Profile".  
The "2" must be entered manually  
and confirmed with "Enter".



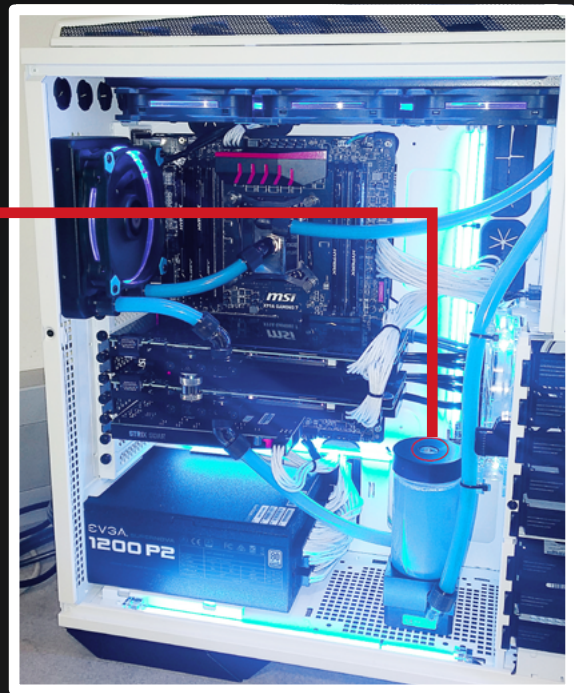
- 4 Then restart your PC with "F10" +  
"Enter".  
Your PC should restart itself with  
the right settings.

# WATERCOOLING

## COMPLETELY WATER-COOLED PC SYSTEMS

Please note the following steps when refilling the water of your water cooling system:

- 1 Turn off your PC and disconnect it from the power.
- 2 Remove the left side panel.
- 3 Remove the marked screw with the Allen key.
- 4 Fill in distilled water until the reservoir is filled up to 90%.
- 5 Now close the reservoir again and restart the PC.
- 6 Make sure there is no water around the screw while the PC is working. If this is the case, fix the hex screw!



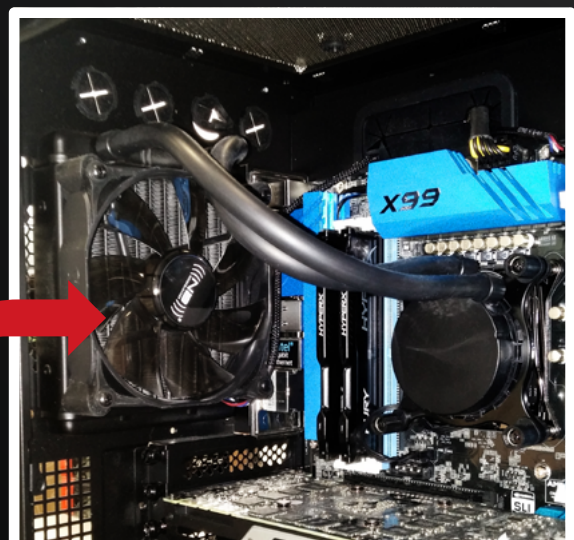
## CPU WATER COOLING

Standard for Low-Noise Gamer and Xtreme Gamer PC systems.

In contrast to completely water-cooled PC systems a water refilling for these systems is not necessary.

CPU Water Cooling

Image example: ASETEK 550LC Extreme



## NOTEBOOK MANUAL



An extensive notebook manual  
is stored directly on your laptop  
(desktop).



Image example



**HI-TECH - REAL OVERCLOCKED GAMING**  
Johann Roithner-Straße 131, 4050 Traun, Tel +43 7229 61000

Copyright© 2017 by HI-TECH. All rights reserved.  
Version 05/2017

Typesetting and printing errors are reserved. Suggestions for improvements: mail to [marketing@hi-tech.at](mailto:marketing@hi-tech.at).